

ROSSLARE



CSN SELECT™ Readers Series



Your cost-effective high-frequency readers

Rosslare's CSN Select™ series comprises a wide range of general purpose access control and RFID card readers to meet your budget, delivering high performance and an extensive set of features. This series of contactless smart card readers (13.56 MHz) supports a wide range of RFID reading formats, including NFC and sector reading.

Equipped with OSDP secure channel, together with vandal proof and water resistance properties, the CSN Select™ readers address all installation and maintenance needs.

Organizations using the CSN Select™ line of products can develop a credentials strategy that better accommodates different user profiles, combining soft & hard credentials for optimal cost vs. functionality across the different sites & points of access.

CSN Select™ readers can be easily configured and tailored on-site using a configuration card or keypad. It can also function as a secured standalone controller when connected to a power supply.

Extensive selection of readers



AY-K6255

AY-L6255

AY-M6255

AY-H6255

AY-Q6255

AYC-M6355

AYC-H6355

AYC-Q6355

Multi-technology

Reads majority of 13.56 MHz contactless credentials including NFC and MIFARE Classic® EV1.

MIFARE Classic® EV1 Sector Read

Compatible with MIFARE Classic® Sector reading, ISO 14443A 1K and 4K cards and tags.

Simple migration to OSDP

Supports SIA Open Supervised Device Protocol (OSDP V2) including SCP mode ("Secured Channel Protocol") bi-directional communication between the reader and door controller, making migration from Wiegand to OSDP simple.

Universal Wiegand support

With a wide range of Wiegand format outputs, even legacy systems can enjoy the benefits of CSN Select™ without having to replace legacy controllers or existing wiring.

Vandal proof & outdoor ready

IP68 Water and Dust Resistant, IK08 Vandal Resistant.



IP68



IK08

Dual factor authentication support

Enhanced security powered by Rosslare AxTraxPro Access Control Management Platform to enable dual credentials policy for higher security.

Sleek, innovative design

Wide variety of designs and sizes suitable for modern architecture to meet most demanding customer requirements.

Secure mobile credentials

Leveraging users' smartphones as credentials, remote enrolment enables contactless operation with NFC technologies using Rosslare BLE-ID™ app or Mobile Credentials SDK.

NFC mobile identity for Android



- Available in apps stores
- Up to 7cm range for NFC
- Optimized user experience
- Remote user enrollment for high convenience



Rosslare Convertible technology

The CSN Select™ keypad-enabled readers are convertible PIN/RFID readers that automatically determine whether to function as a reader or as a secured standalone controller.



When the unit is connected to a standard access control unit, it functions as a reader. When it is connected to a Rosslare secured intelligent power supply, it functions as a 500-user secured standalone controller.

USB Desktop enrollment reader

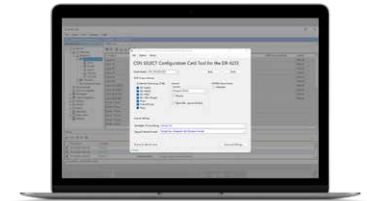
The DR-6255 from the CSN Select™ series supports a wide range of 13.56 MHz multi-format smart cards, making it easier to read the credentials data and transmit it via USB to the connected access control software, such as Rosslare's AxTraxPro™.



DR-6255

USB desktop programmer for configuration cards

Using Rosslare DR-6255 and its CS-CCT software configuration tool, installers and customers can easily create configuration cards for setting their readers.



USB desktop programmer for credentials

Using Rosslare CP-R27 and its AS-B01 software configuration tool, installers and customers can easily program their secured MIFARE Classic® EV1 Sector Read credentials on site.



CP-R27

AS-B01

13.56 MHz MIFARE Classic® credentials lineup



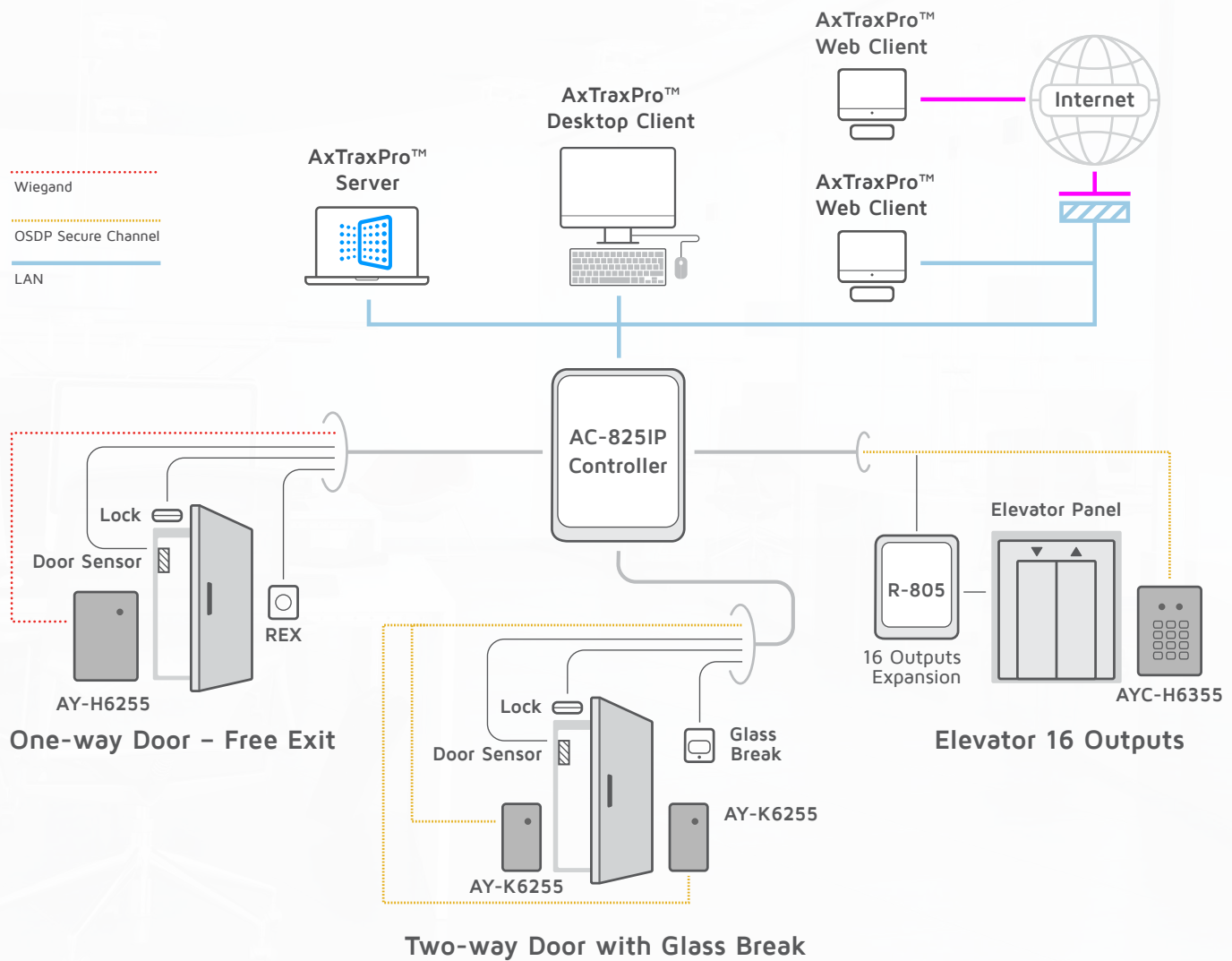
Supports Rosslare MIFARE Classic® credential technology in a variety of form factors, from most standard ISO cards through various key fobs. The credentials are available pre-formatted or pre-programmed.

Fit for any use case

CSN Select™ readers are ideal for Access Control & Parking Management in residential buildings, hospitals, laboratories, offices, smart cities, enterprises, hotels, universities, banks and more.



System configuration



Scan to download



BLE-ID™ app