

ROSSLARE



# CSN SMART™

## Readers Series



## Smart & cost-effective mobile readers

Rosslare's CSN Smart™ series consist of general purpose access control and RFID card readers that meet your budget, delivering high value and performance. The series of contactless smart card readers (13.56 MHz) supports wide-ranging RFID reading formats, including Bluetooth and NFC, and is completely vandal-proof and water-resistant.

Organizations using the CSN Smart™ line of products can develop a credentials strategy that better accommodates different user profiles, combining soft & hard credentials to achieve optimal cost vs. functionality across various sites and points of access.

CSN Smart™ readers can be easily configured on site using a configuration card or keypad, as well as via a mobile application, enabling installers and integrators to maintain units without complex equipment or configuration software.

## Flexible high-frequency and BLE technology packed in one



AY-H6255BT



AY-H6355BT

### Multi-technology

Reads majority of 13.56 MHz contactless credentials technologies, including Bluetooth® and NFC.

### Universal Wiegand support

With a wide range of Wiegand format outputs, even legacy systems can enjoy the benefits of CSN Smart™ without having to replace legacy controllers or existing wiring.

### Vandal proof & outdoor ready



IP68



IK08

IP68 Water and Dust Resistant, IK08 Vandal Resistant.

### Dual factor authentication support

Offers enhanced security powered by Rosslare AxTraxPro management system, enabling dual credentials policy for higher security.

### Sleek, innovative design

Designed to fit modern architecture in order to meet the requirements of most demanding customers.

## Secure mobile credentials

Leveraging users' smartphones as credentials, remote enrollment enables contactless operation with BLE (Bluetooth Low Energy) and NFC technologies using Rosslare BLE-ID™ app or Mobile Credentials SDK for third party applications.

### Bluetooth® & NFC mobile identity for iOS and Android



- Available in apps stores
- Up to 12m range for BLE
- Up to 7cm range for NFC






- Optimized user experience
- Remote user enrollment for high convenience



## Friendly mobile admin app

Making deployment and management quick and easy with intuitive installer app for iOS and Android (Rosslare BLE-Admin™).

-  Easy installation with Rosslare BLE-Admin™ app
-  Secured initial reader setup in minutes
-  Reduced technical support



## 13.56 MHz MIFARE Classic® credentials lineup



Supports Rosslare MIFARE Classic® credential technology in a variety of form factors, from most standard ISO cards through various key fobs. The credentials are available pre-formatted or pre-programmed.

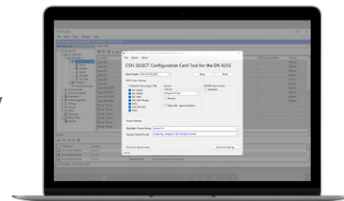
## USB Desktop enrollment readers

The DR-6255 and the DR-U955BT support a wide range of 13.56 MHz multi-format smart cards and Rosslare BLE-ID™ credentials (accessed by BLE and NFC), making it easier to read the credentials data and transmit it via USB to the connected access control software, such as Rosslare's AxTraxPro™. The DR-U955BT can also read UHF.



## USB desktop programmer for configuration cards

Using Rosslare DR-6255 and its CS-CCT software configuration tool, installers and customers can easily create configuration cards for setting their readers.

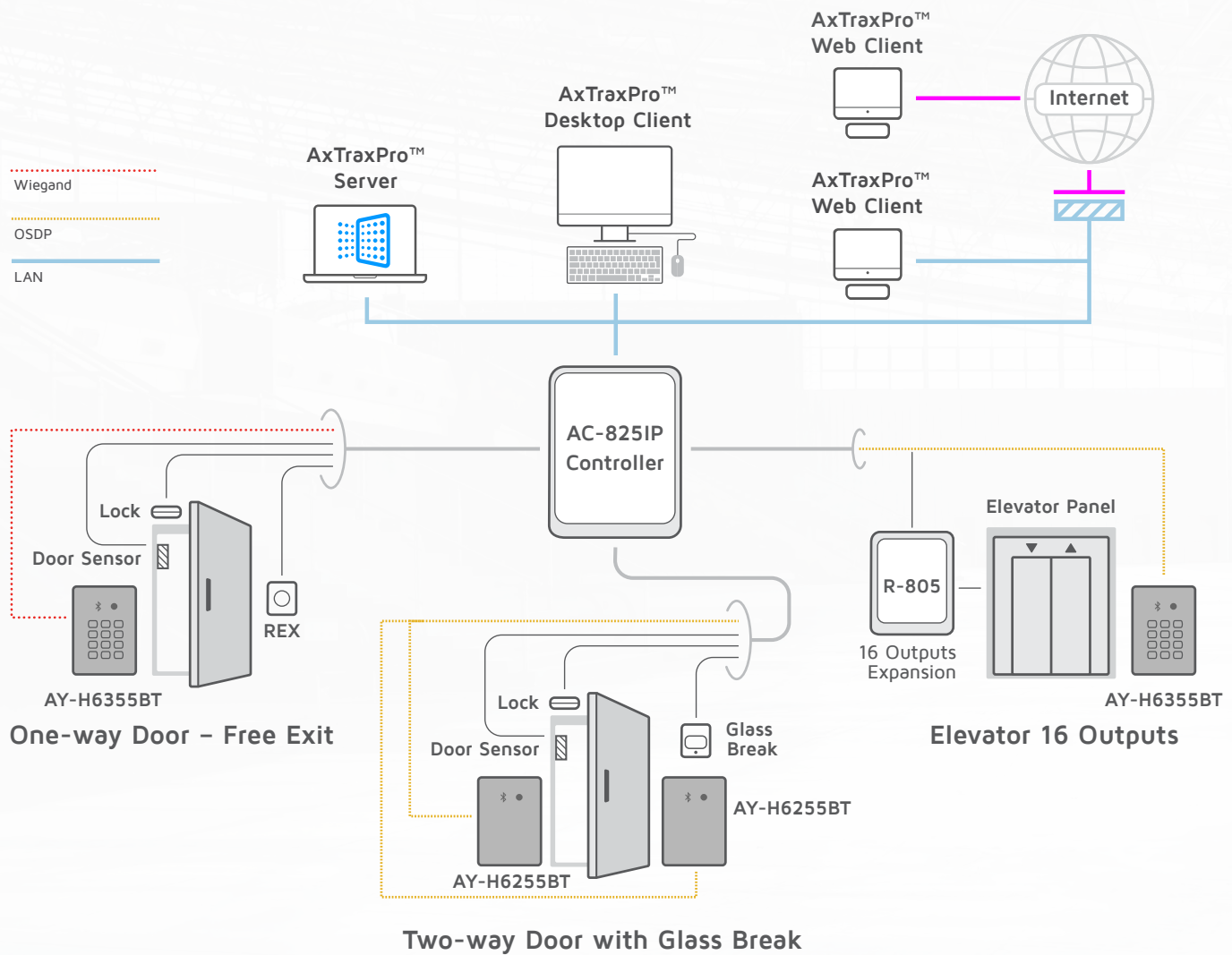


## Flexible to fit for any use case

CSN Smart™ readers are ideal for Access Control & Parking Management in residential buildings, hospitals, laboratories, offices, smart cities, enterprises, hotels, universities, banks and more.



# System configuration



Scan to download

