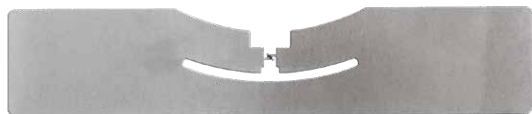
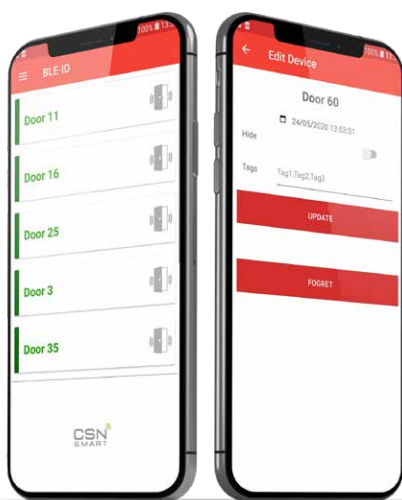


Rosslare Cards & Credentials

From technology to form factor and beyond



A wide range of open and secure credentials

Rosslare offers a large selection of high-quality credentials compatible with today's most popular devices, ideally suited for various applications and environments. The credentials offering was created to cover organizations' needs – from technology to form factor – while featuring long-lasting product quality for peace of mind and cost savings.

Rosslare's rich product portfolio includes both low and high frequency credentials: legacy 125 kHz EM and Temic, MIFARE Classic, Plus and DESFire EV1 that operate in 13.56 MHz and provide high-level security, and UHF Alien Higgs-3 credentials that provide a great reading distance. All credentials are available unprogrammed or preprogrammed with optional inkjet printing or laser engraving.

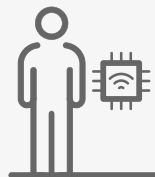
In addition to physical credentials, Rosslare offers mobile credentials solutions that leverage users' smartphones as credentials, allowing access to doors without using physical keys. The solutions utilize BLE (Bluetooth Low Energy) and NFC technologies, combined with a Rosslare mobile app, as well as an SDK that allows developers to integrate the technology and turn any 3rd party iOS and Android apps into a mobile key with only a few lines of code.



13.56 MHz
MIFARE® DESFire® EV1



13.56 MHz
MIFARE Plus®



13.56 MHz
MIFARE Classic® EV1



125 kHz
EM & Temic



UHF Alien
Higgs-3



Mobile
Credentials App



Mobile
Credentials SDK

Curious to know which credentials fit your needs the most?

Contact us: sales@rosslaresecurity.com